

## Overview

GE Nav v2.0 represents the latest advancement in DVR management software. This single application delivers centralized and remote video management capabilities combined with backwards compatibility to accommodate legacy and new DVRs. Ideal for LAN or WAN applications, GE Nav v2.0 is well suited for any application incorporating multiple sites and cameras: schools, retail stores, geographically dispersed corporations, transportation, entertainment venues, homeland security and public safety.

From a single, easy-to-use and reliable GUI, administrators can remotely configure users/groups, DVRs and cameras, and monitor thousands of video surveillance components. At any time, from any location, operators can cost-effectively provide accurate and timely security response. Backed by a client/server architecture, GE Nav v2.0 is a fully scalable solution that can support applications ranging from enterprise IT environments down to stand-alone systems.

## Key Functions

**Notifier** – Allows you to collect and manage any alerts sent to you from the various security devices.

**Navigator** – Provides access to all DVRs and cameras in a system, with a user-friendly What-With-When filter to pinpoint specific video objects with minimal clicks.

**Help** – Offers detailed system instructions as well as information on GE Nav versions, Tech Support Contacts and copyrights.

**Viewer** - Operators can view live and recorded video selected from the Notifier, Navigator or Collector.

**Timeline** – Allows users to seek and play video at any point along a pre-selected time interval.

**Controller** –Allows the user to view or edit the properties of currently selected objects in the Navigator.

**Collector** –Acts as a holding repository for video segments, snapshots, and local recordings ready for export.

**Tasks** – Provides one central place to monitor the progress of the tasks created in the system, such as video exports, firmware upgrades and bulk DVR configurations.

## Standard Features

- Backward capability allows GE Nav v2.0 to manage DVMRe and StoreSafe™ lines as well as Sym-line DVRs so that your investment in legacy equipment can be leveraged
- Wide scalability ranging from enterprise IT environments to stand-alone systems accommodates future growth needs
- Remote client software distribution alleviates the need to physically ship media
- Centralized remote user/group management facilitates system scale and control, reducing workload and security risk
- Health Diagnostics function automatically polls DVRs for health data to maintain constant system uptime
- Multiple alert notifications generated by DVRs are collected and presented to aid in proper tracking and quick resolution
- Remote DVR configuration and firmware uploads reduce administration time and costly site visits
- Scheduled video exports from DVRs enables video transfers to occur during low bandwidth hours freeing up network capacity during high demand periods
- Multi-site feature enables the display of videos from multiple cameras and DVRs simultaneously, allowing for seamless integration of both legacy and Sym-line DVRs in a single video display
- Custom view delivers unlimited, custom-configured views ensuring the right video is viewed at the right time

# GE Nav v2.0

## DVR management software



# GE Security

North America  
T 800-885-5700  
T 888-GE-SECURITY  
888-437-3287

Asia  
T 852-2907-8108  
F 852-2142-5063

Australia  
T 61-3-9239-1200  
F 61-3-9239-1299

Europe  
T 32-2-725-11-20  
F 32-2-721-40-47

Latin America  
T 305-593-4301  
F 305-593-4300

gesecurity.com

Specifications subject to  
change without notice.

© 2008 General Electric Company  
All Rights Reserved

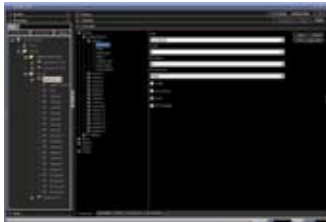
## Powerful new GUI allows for different levels of user interaction



Managing all aspects of the system



Video monitoring and review



Administration and system maintenance

## Specifications

### Client Requirements: Hardware

	High-end	Recommended	Minimum
<b>CPU</b>	Intel Core 2 Duo Processor, 3.4 GHz, 4MB Cache	Intel Core 2 Duo Processor, 2.33 GHz, 4MB Cache	Intel Pentium 4 Processor, 2.8 GHz
<b>RAM</b>	4GB	2GB	1GB
<b>Video Card</b>	512MB ATI Radeon 4800, with Pixelshader capability, Comparable 512MB NVIDIA GeForce 9800 GTX+	256MB ATI Radeon 2400XT or comparable 256MB NVIDIA GeForce 6200	AGP or PCI Express, 128MB DDR Memory
<b>Hard Drive</b>	500GB	160GB	160GB
<b>Network</b>	1000 Ethernet Interface Card	10/100 Ethernet Interface Card	10/100 Ethernet Interface Card

### Client Requirements: Software

- OS: Microsoft® Windows XP Pro SP2 or higher 32-bit (Prerequisite)
- Microsoft .Net Framework 2.0 (Packaged with Installation)
- SQL Express 2005 (Packaged with Installation)

### Server Requirements: Hardware (minimum)

<b>CPU</b>	Dual Core Intel Xeon, 2.4 GHz, 4MB Cache
<b>RAM</b>	4GB
<b>Video Card</b>	256MB ATI Radeon 2400XT or comparable 256MB NVIDIA GeForce 6200
<b>Hard Drive</b>	500GB
<b>Network</b>	1000 Ethernet Interface Card
<b>Monitor</b>	1024x768, 32-bit color

### Server Requirements: Software

- OS: Microsoft® Windows Server® 2003 R2 Standard Edition (Prerequisite) or
- OS: Microsoft® Windows XP Pro SP2 or higher 32-bit (Prerequisite)
- Microsoft Internet Information Services (IIS) 6.0+ (Prerequisite) or Cassini Web Service (Packaged with Installation)
- Microsoft .Net Framework 2.0 (Packaged with Installation)
- SQL Express 2005 (Packaged with Installation)

### Supported DVRs/Firmware

GE Nav 2.0 will support the latest firmware and 1 revision back as per below.\*

GE Security DVRs	Supported Firmware
SymDec™ 1	1.47e and 1.48a
SymDec 4	1.47e and 1.48a
SymDec 16 <i>plus</i> 4	1.46r and 1.47k
SymSafe™ Pro 4/8/16	1.27b and 1.28i
SymSafe Basic 4/8/16	
DVMRe CS Series 4/10/16	5.21
DVMRe CT (Triplex) Series 4/10/16	
DVMRe Pro Series 4/10/16	5.68a and 5.69
DVMRe ezT Series 4/10/16	
DVMRe CD Series 4/10/16	
DVMRe CT II Series 4/10/16	6.28a and 6.29
StoreSafe™ DVR Series 4/10/16	5.68a and 5.69
StoreSafe DVR PII Series 4/10/16	6.28a and 6.29
StoreSafe DVR Advanced Series 4/10/16	6.28a and 6.29
DSR	2.23d and 2.24a
DVSe Series - Storage device	1.20g, 1.41w or 3.04

\*As of December 2008.



imagination at work